

PCIE-8130-HL Quick Start Guide

P/N: 6806877A03A March 2021

1 Box contents

Make sure you receive all items of your shipment:

- One PCIE-8130-HL card
- One printed copy of *Quick Start Guide* (this document)
- One printed copy of *Safety Notes Summary*



When installing or servicing the system or accessories, strictly observe the safety precautions in the *Safety Notes Summary*. Ignoring these instructions can void the system warranty and cause personal injury or property damage.

2 ESD

Use ESD protection



Electrostatic discharge and incorrect installation or removal of the card can damage circuit or shorten its life.

Use a properly grounded ESD wrist strap or work in an ESD-safe environment.

Connect to the ESD connector at the front or the rear of the system.

3 Site preparation

Note: Consult the installation manual provided by your server vendor for instruction on how to install the card in a specific server.

1. Make sure that all environmental and power requirements defined in the *PCIE-8130 Installation and Use* manual are met.
2. The PCIE-8130-HL card requires a PCIe x4 connector size. It can also be installed in a x8 or x16 slot.
3. The PCIE-8130-HL can be installed in a system board PCIe slot or on a PCIe riser card.
4. Make sure the server can accommodate the full-height, half-length PCIE-8130-HL card and that it provides snap-in fixation or screw holes.
5. Verify that the I/O slot can supply power via the 12V supply rail in accordance with the PCI Express Card Electromechanical Specification definition for a 75W slot.

4 Install PCIe cards

Note: Consult the installation manual provided by your server vendor for instructions on how to power down and remove the housing cover from the system.

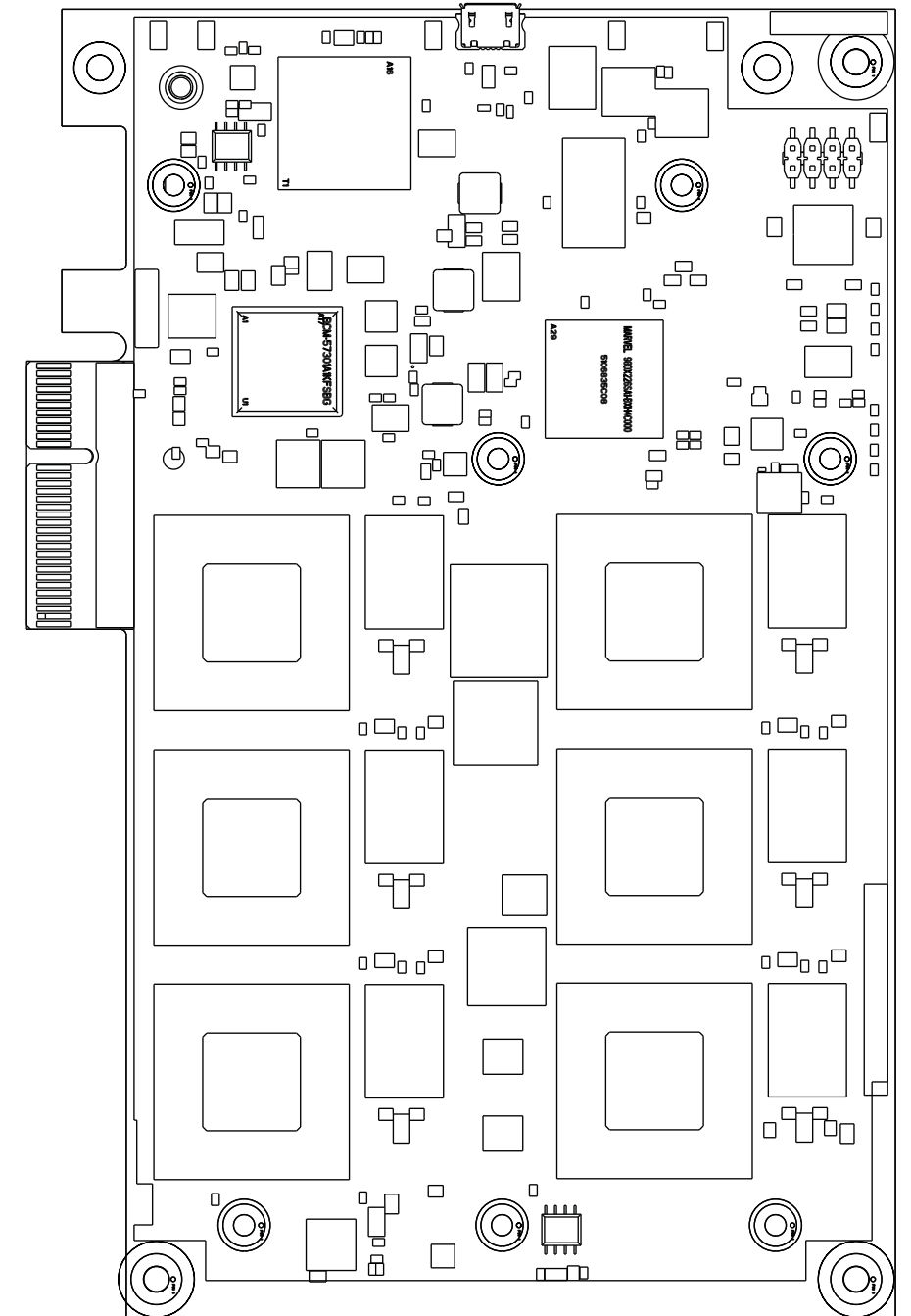
1. Shut down and disconnect the system from AC power.
2. Remove the housing cover from the server.
3. Remove the filler cards or filler panels in the PCIe slots, if any.
4. Install the PCIE-8130-HL card(s) in the respective slot(s) by gently pushing the card along the guide rails till the card is fully engaged with the connector. Avoid excessive force during this operation.
Note: If a retainer clip is used in the target server to secure the card, the clip must be applied for proper operation of the card.
5. Fill any empty PCIe slots with filler cards or filler panels. A slot adjacent to the component side (primary side) of a high power card should always contain a filler card for better cooling.

For more information about PCIE-8130-HL card installation, refer to the *PCIE-8130 Installation and Use* manual.

5 Power connector info

Power for the PCIE-8130-HL card is supplied via the PCIe card edge connector. No additional power (via ATX connectors) is used.

For more information about connecting cables and power cords, refer to the *PCIE-8130 Installation and Use* manual.



Technical Assistance

For technical assistance or to report product damage or shortages, contact your local SMART Embedded Computing sales representative or visit <https://www.smartembedded.com/ec/support/>.

Get More Information



For more information on this product, see the *PCIE-8130 Installation and Use* manual and other related technical documentation, which can be found by using the Documentation Search at <https://www.smartembedded.com/ec/support/>.



© 2021 SMART Embedded Computing™, Inc. All rights reserved. The stylized “S” and “SMART” is a registered trademark of SMART Modular Technologies, Inc. and “SMART Embedded Computing” and the SMART Embedded Computing logo are trademarks of SMART Modular Technologies, Inc. All other names and logos referred to are trade names, trademarks, or registered trademarks of their respective owners. These materials are provided by SMART Embedded Computing as a service to its customers and may be used for informational purposes only. For full legal terms and conditions, visit www.smartembedded.com/ec/legal.